



# SULTAN STEEL

A Steel Perspective

## **Manufacturer of:**

- 1. Pre-Engineered Buildings**
- 2. Architectural Facades**
- 3. Modular Porta-Cabins**
- 4. Camps**
- 5. Shelters**
- 6. Modified Containers**
- 7. Overhead and Gantry Cranes**
- 8. Silos, Tanks and Site Utility**
- 9. Sheet Metal Processing**
- 10. Accessories**

# Our Story

**SULTAN STEEL** is a large scale professional steel structure company integrating the trading, designing, production and installation.

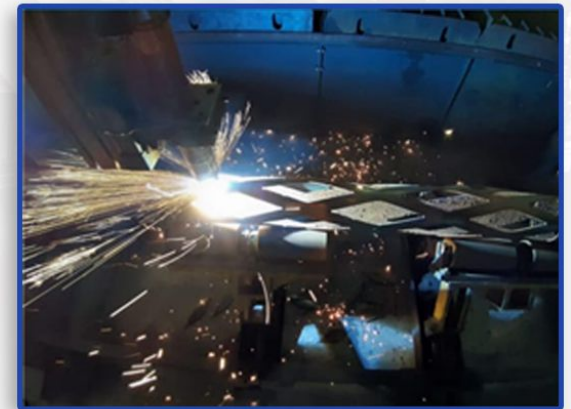
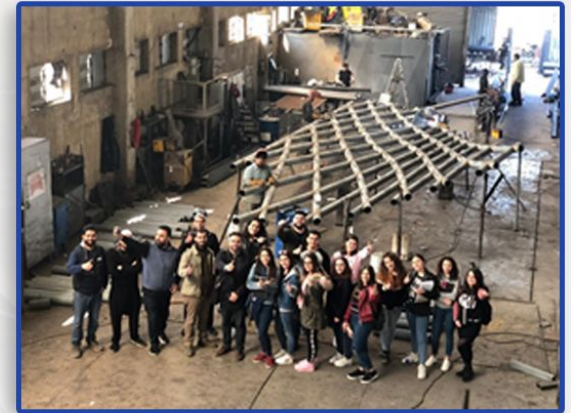
**SULTAN STEEL** provides complete solutions including consulting, design, fabrication and erection of high-quality pre-engineered steel buildings, Prefabricated Houses and steel structure products.

Since its establishment in 1995, it has provided hundreds of worldwide customers for durable, affordable and versatile steel structured buildings and prefabricated houses in different countries over the world.

**SULTAN STEEL** production workshop covers an area of 35,000 square meters, and have many producing lines including coil straightening, coil slitting, bending, roll forming for C and Z purlins, rolling shutter slats and guide rails.

Today, SULTAN continues to expand its horizon to include welding and cutting with the latest CNC and CNC II technologies, production of trapezoidal and sinusoidal roofing sheets, galvanized and pre-painted, corrugated products and accessories for rolling shutters

Our company offers variety of products which can meet your multifarious demands. We adhere to the management principles of "quality first, customer first and credit-based" since the establishment of the company and always do our best to satisfy potential needs of our customers. Our company is sincerely willing to cooperate with enterprises from all over the world in order to realize a win-win situation since the trend of economic globalization has developed with an irresistible force.



# Vision, Mission and Values

## VISION:

We aim to be one of the best organizations in Steel manufacturing industry. We are not only focus on product quality but also our customer's benefit as well.

Let "US" consult and build the Steel Future.

## MISSION:

To supply high-quality steel products, providing related services and solutions to a worldwide client base while utilizing innovative technologies within an environment of motivated employees, focused on continuous improvement, highest business standards leading to added value for our customers.

## OUR VALUES

### MINDSET

Think and act creatively, proactive to deliver solutions.

### RESPONSIBILITY

Dare and Responsible for your Actions.

### INTEGRITY

Honest, Transparent, no self-interest, no cheating.

### TEAMWORK

Work for your team and for a common objective.

## "OUR CLIENTS SUCCESS IS OUR SUCCESS"

Our Clients are at the center of all our decision and operations. We have built strong long-term relationships with our customers by delivering high quality and competitively priced buildings while providing them unparalleled



# PRE-ENGINEERED BUILDING



## 01 / Structural Design

With the help of modern 3D software, we are able to design cost effective structures and create accurate models to generate fabrication drawings from



## 03 / Steel Fabrication

We specialize in heavy structural steel fabrication, We only use high quality raw materials follow strict fabrication methodology and quality control procedures



## 02 / Building Detailing (Free)

We provide our clients in the review process, giving them a glimpse of the structure to come. Can save you steel to the greatest extent and achieve good economic benefits.



## 04 / Installation

Combined with proper planning and careful evaluation of site conditions, installs are done with speed and safety. And we provide the installation guide for clients.

# COMPLETED PROJECTS

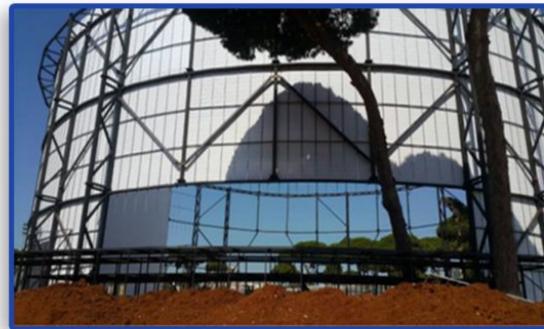
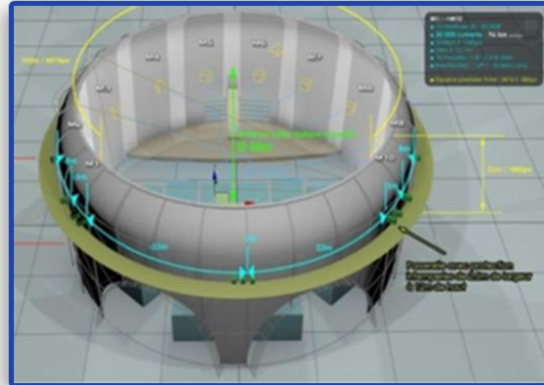


# ARCHITECTURAL FACADE

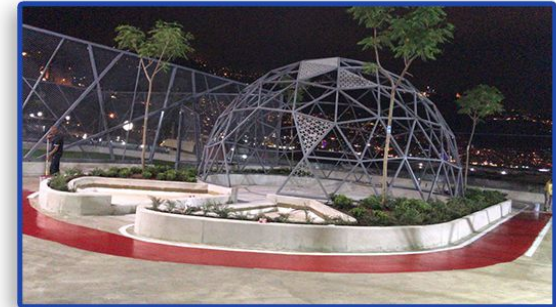
**Beirut North Souks  
ZAHA HADID Design**



**BEIRUT FESTIVAL**



**AQUA MARINA II**



# MODULAR PORTA-CABINS

## PRE-ASSEMBLED MODULAR CABINS



## KNOCKED MODULAR CABINS

These cabins will be shipped to site by pieces & built "on-site" to provide maximum ease and functionality and lifted into place by crane once finished. It will be built to any size and shape in order to fully satisfy your personal or business needs.



## FLAT PACK MODULAR CABINS

The flat pack modular cabin is a bolt connection house, once it developed it attract peoples' eyes as the following advantage.

- Fast production
- Easy to assemble :2 units /day.
- Easy to transport : qty. 1 40HC shipping container could load 8-10units.
- Easy to connect, should you need a bigger space, it can be connected



**install**



# MODULAR PORTA-CABINS





# PREFAB. MODULAR BUILDINGS

Our prefabricated buildings come in a wide variety of standard layouts, and we can also create custom structures to your requirements. The structures can be one storey as well as being produced in two or three storeys.

Intended Use :

Prefabricated Office Buildings

Prefabricated Dormitory Buildings

Prefabricated Restaurant Buildings

Prefabricated School Buildings

Prefabricated Showroom and Sales Office

Prefabricated Health Facilities

Prefabricated Military Buildings

Prefabricated WC & Shower Buildings

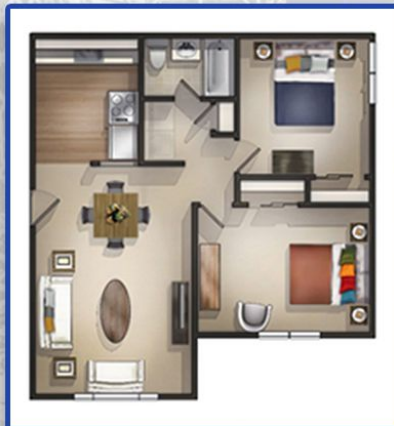


# MODULAR HOMES

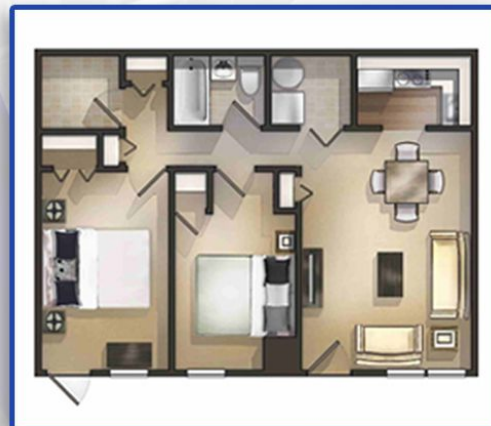
SULTAN STEEL offers comprehensive architectural and interior design services so you can build a home that will fit your lifestyle. By integrating the planning, design and engineering stages, SULTAN HOMES can streamline the custom design process and offer you increased visibility, control and precision each step of the way.



1 Bed Room/Area 50m<sup>2</sup>



2 Bed Rooms /Area 70m<sup>2</sup>



2 Bed Rooms/Area 80m<sup>2</sup>



Duplex /Area 120m<sup>2</sup>

# ARMY AND LABOUR CAMPS

We are specialists in the production and installation of labour & Military camps based on individual modules, modular constructions and prefabricated buildings.

Our modules such as Dormitories, Offices, Changing rooms, Sanitary, Kitchen complexes, Warehouses, Laboratories, Guard houses, School classes, Entertainment rooms & Laundry Facilities, are designed for different sectors: construction and public works, mining, oil services, emergencies or military camps.



# TELECOM. SHELTERS and TOWERS



TELECOM TOWER



ROOF TOP TELECOM  
TOWER



TELECOM TOWER



OUTDOOR TELECOM SHELTER



# MODIFIED CONTAINERS

Shipping containers are extremely strong, durable and versatile, providing an ideal base to be converted into multiple arrays of practical solutions.

We have years of experience in helping customers transform their ideas for container workshops, pop-up shops, cafes or restaurants, outdoor rooms, and more, into reality with in-house engineers and draftsman to assist in the design and a production team to ensure quality workmanship in the final product



**10' CONTAINER**

	External Dimensions	Internal Dimensions
LENGTH:	3029mm	2950mm
WIDTH:	2438mm	2352mm
HEIGHT:	2591mm	2393mm

**20' CONTAINERS**

	External Dimensions	Internal Dimensions
LENGTH:	6058mm	5900mm
WIDTH:	2438mm	2352mm
HEIGHT:	2591mm	2393mm

**40' CONTAINERS**

	External Dimensions	Internal Dimensions
LENGTH:	12200mm	12035mm
WIDTH:	2438mm	2352mm
HEIGHT:	2591mm	2393mm



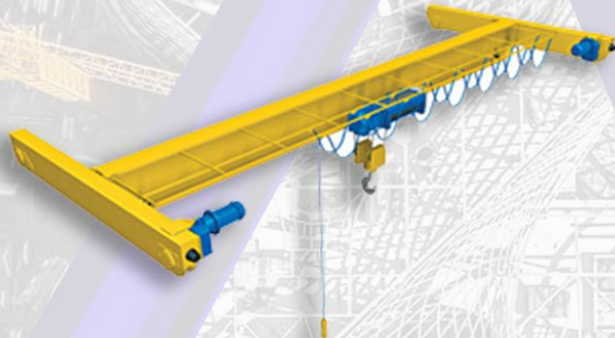
# OVERHEAD AND GANTRY CRANES



MONORAIL CRANES.



JIB CRANE:



SINGLE GIRDER CRANES



DOUBLE GIRDER CRANES



GANTRY CRANES

# SILOS AND TANKS

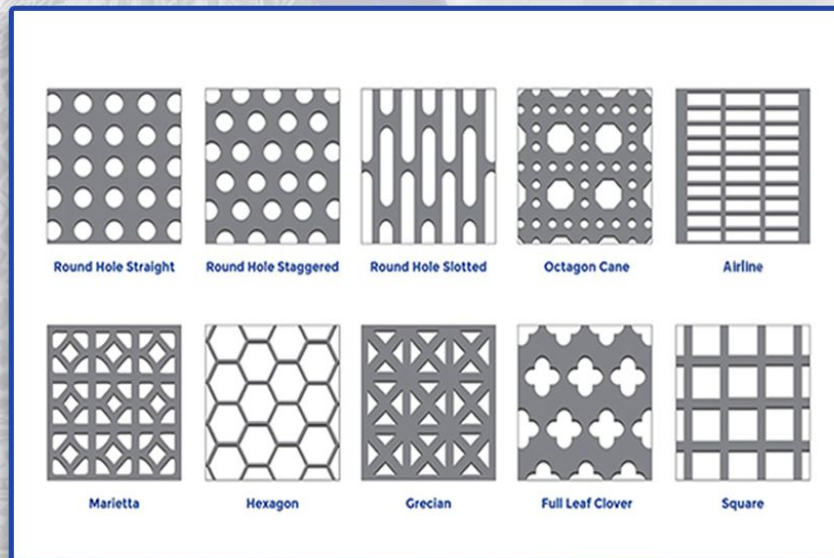
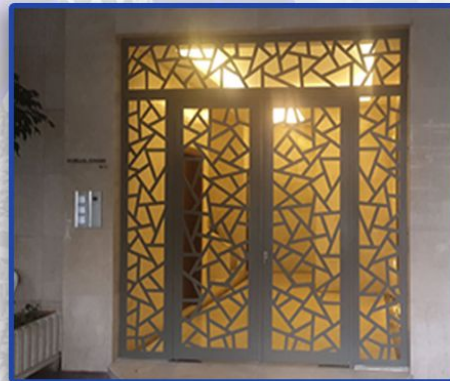
- In compliance with International Codes
- Fabricated, inspected and tested against the leakage before shipment
- High quality fitting and superior material of construction.
- Entire range provided with normal and emergency vents openings, sturdy lifting lugs, legs, saddle support and various nozzle openings on the tank
- Body of carbon steel or Stainless Steel
- Carbon steel tanks with Painted surface finish
- Stainless steel with mill finish as standard.
- High grade of welding process to ensure the reliability of each tank.
- Optional accessories: Valves, Level Gauge, Fittings and Pipe work



# SHEET METAL PROCESSING

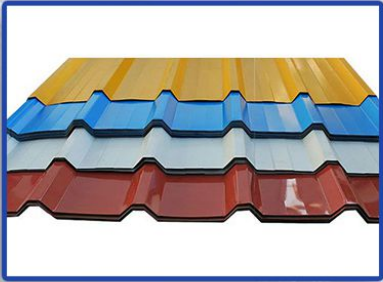
SULTAN Sheet Metal is one of the most diversified metal fabrication companies in Lebanon .  
We are a full service quality-oriented manufacturing company serving over 1000 customers with a wide range of applications, from precision sheet metal to heavy plate.

- CNC Laser cutting
- CNC Water Jet Cutting
- CNC Sheet Bending
- Tube Bending Machine
- Roll Bending
- NC Shearing





# SULTAN ACCESSORIES



Corrugated Sheets



Sinusoidal Sheets



Steel Sheds



Steel Gate



Fire Rated Doors



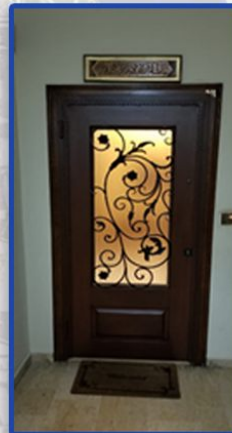
Skylights



Dampers



Steel Canopy



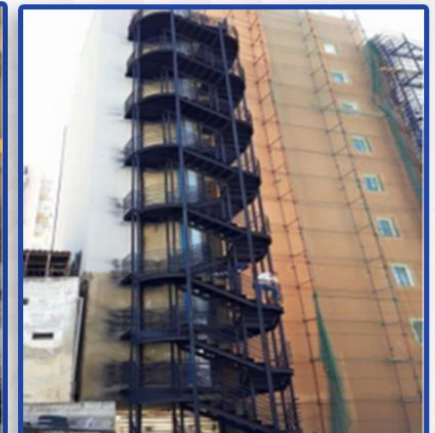
Steel Door



Architectural Stairs



Industrial Stairs



Fire Escape Stairs



# SULTAN STEEL

A Steel Perspective



**WE BUILD  
TRUST AND STEEL**



[abeds@sultansteel.com.lb](mailto:abeds@sultansteel.com.lb)

[m.hammoud@sultansteel.com](mailto:m.hammoud@sultansteel.com)



+961-3-882710

+961-81-994108



[www.sultansteel.com.lb](http://www.sultansteel.com.lb)



Bchamoun Industrial Area, Lebanon